
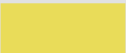


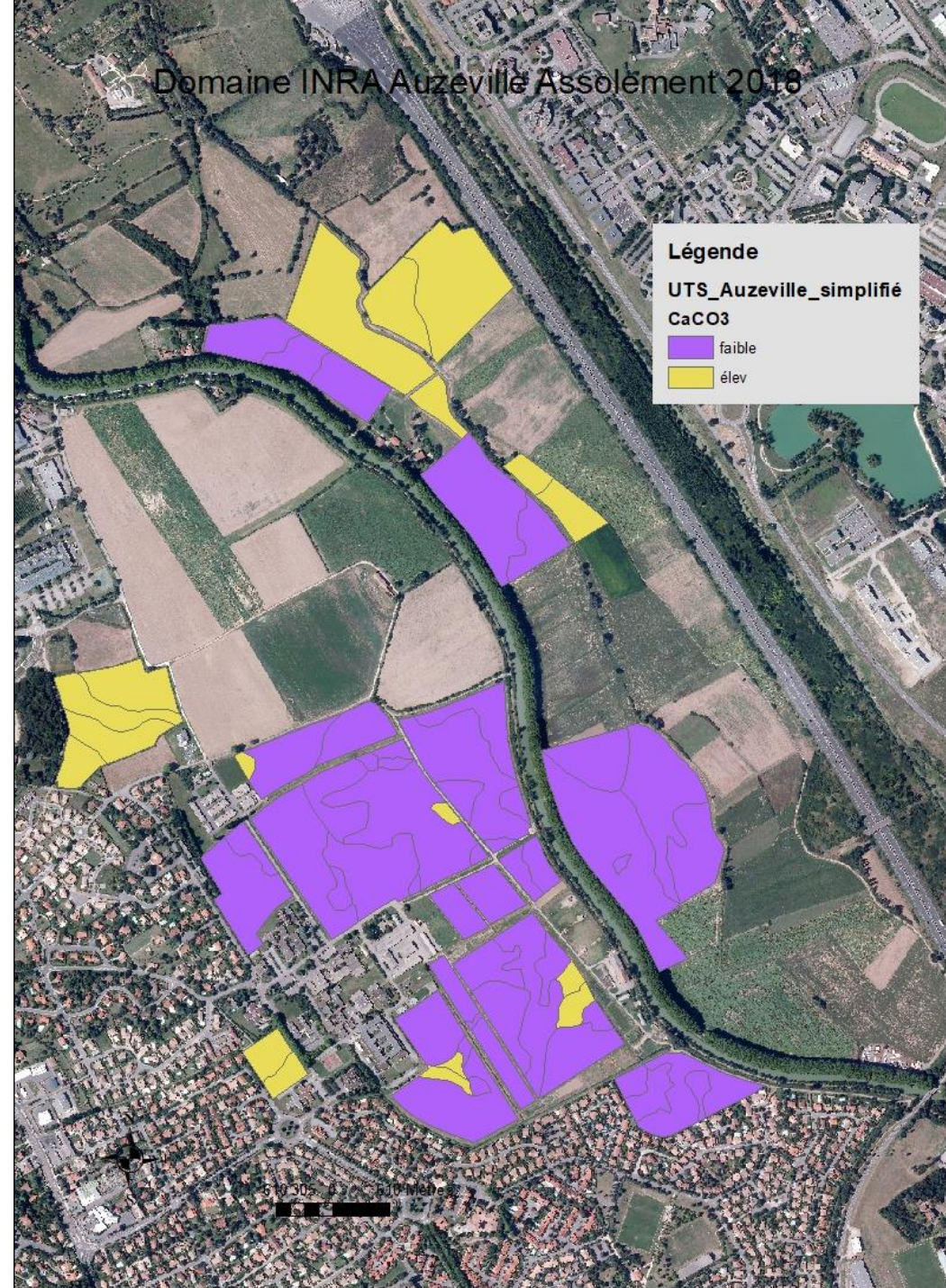
An aerial photograph of a vast agricultural field. The foreground shows a large, rectangular plot of green crops, likely corn, with a red and white harvester and a person standing nearby. The middle ground is a wide, flat expanse of land, possibly a field or a road, leading to a dense line of green trees in the background. The sky is blue with scattered white clouds.

Retrouvez les cartes des Unités Typologiques des Sols (UTS) simplifiées
Domaine de l'UE GCA

Carte des UTS - Carbonate de calcium

Légende

-  Faible
-  Elevé



Carte des UTS - Hydromorphie




Légende

- Hydromorphe
- Sain



Carte des UTS - Profondeur

Légende

-  Assez profond
-  Profond
-  Superficiel



